

670

TRIMARINE



VPLP
Design



LIFE BEYOND HORIZONS







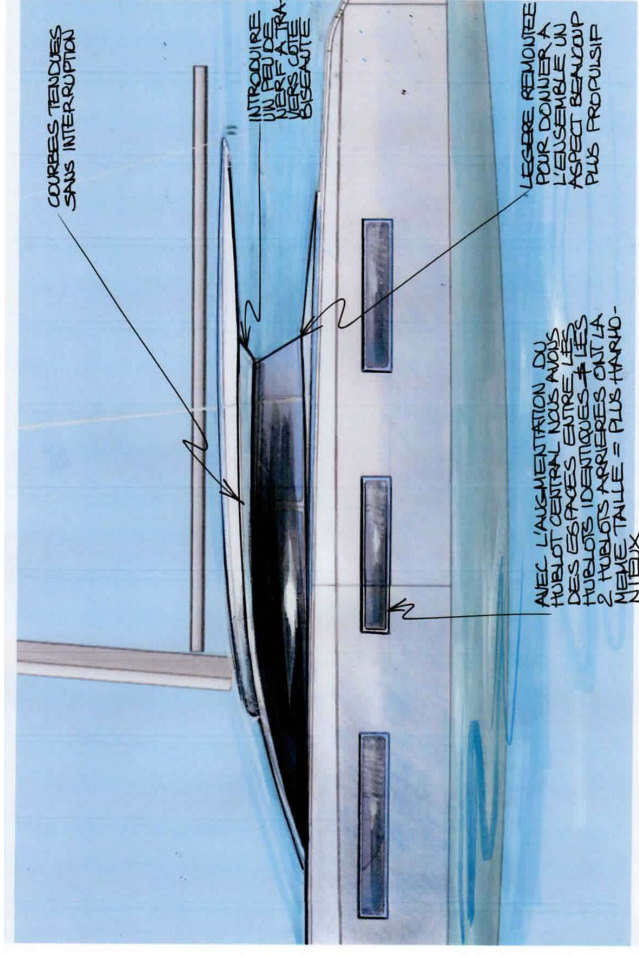
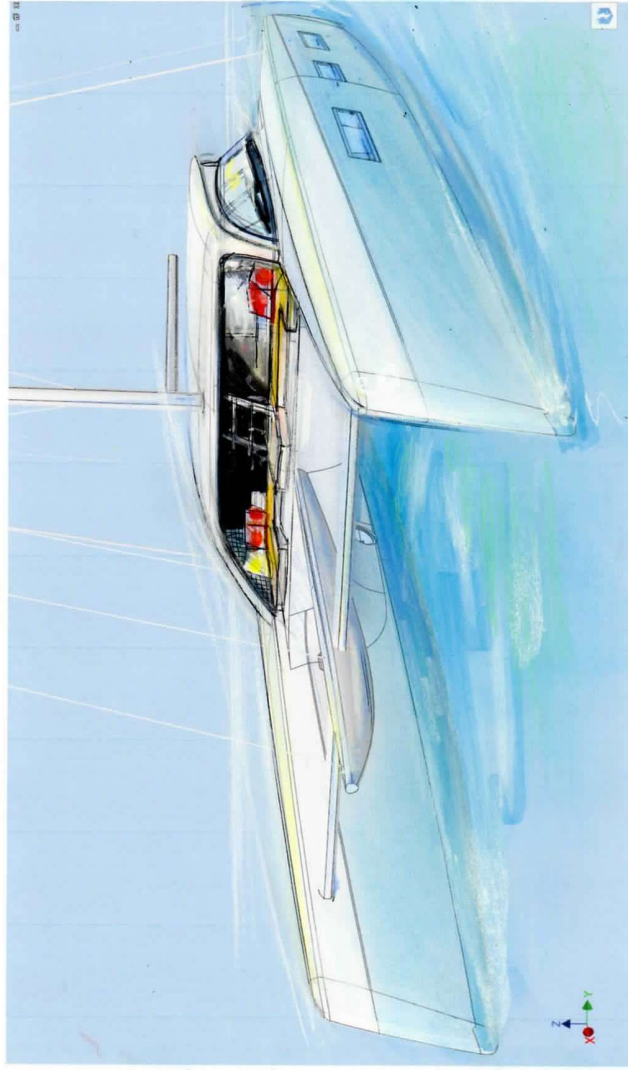
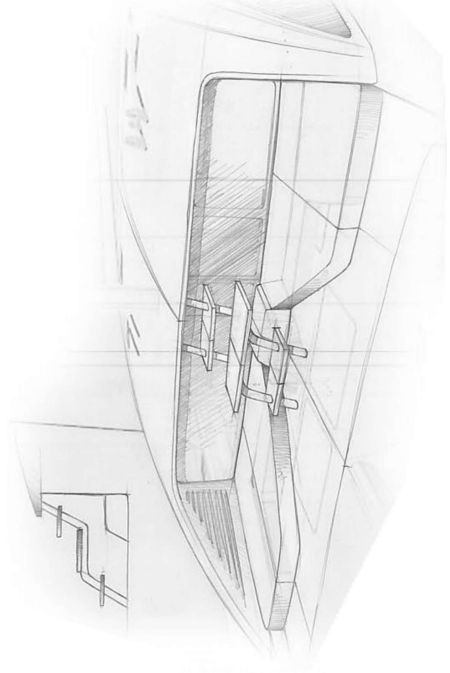
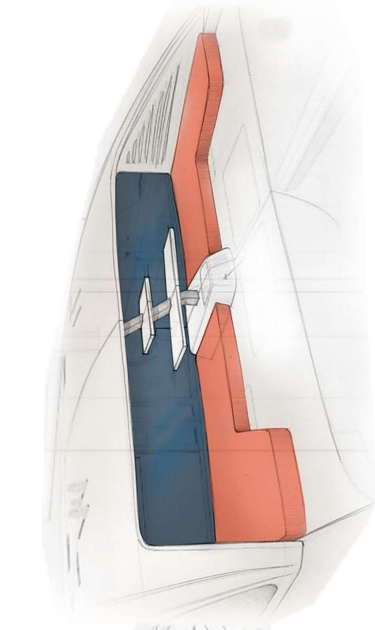
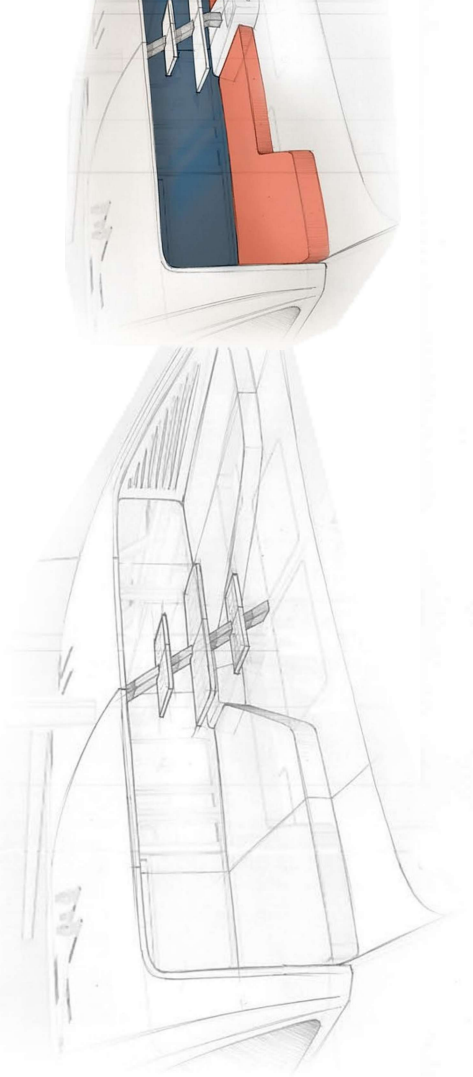
GP70

The Initial Design



From the vision of Gael Paclot, an aesthete and experienced navigator who created a “concept team” to draw and build his GP70.

The VPLP team, together with Patrick Le Quément and Gsea Design joined forces developing the initial design.

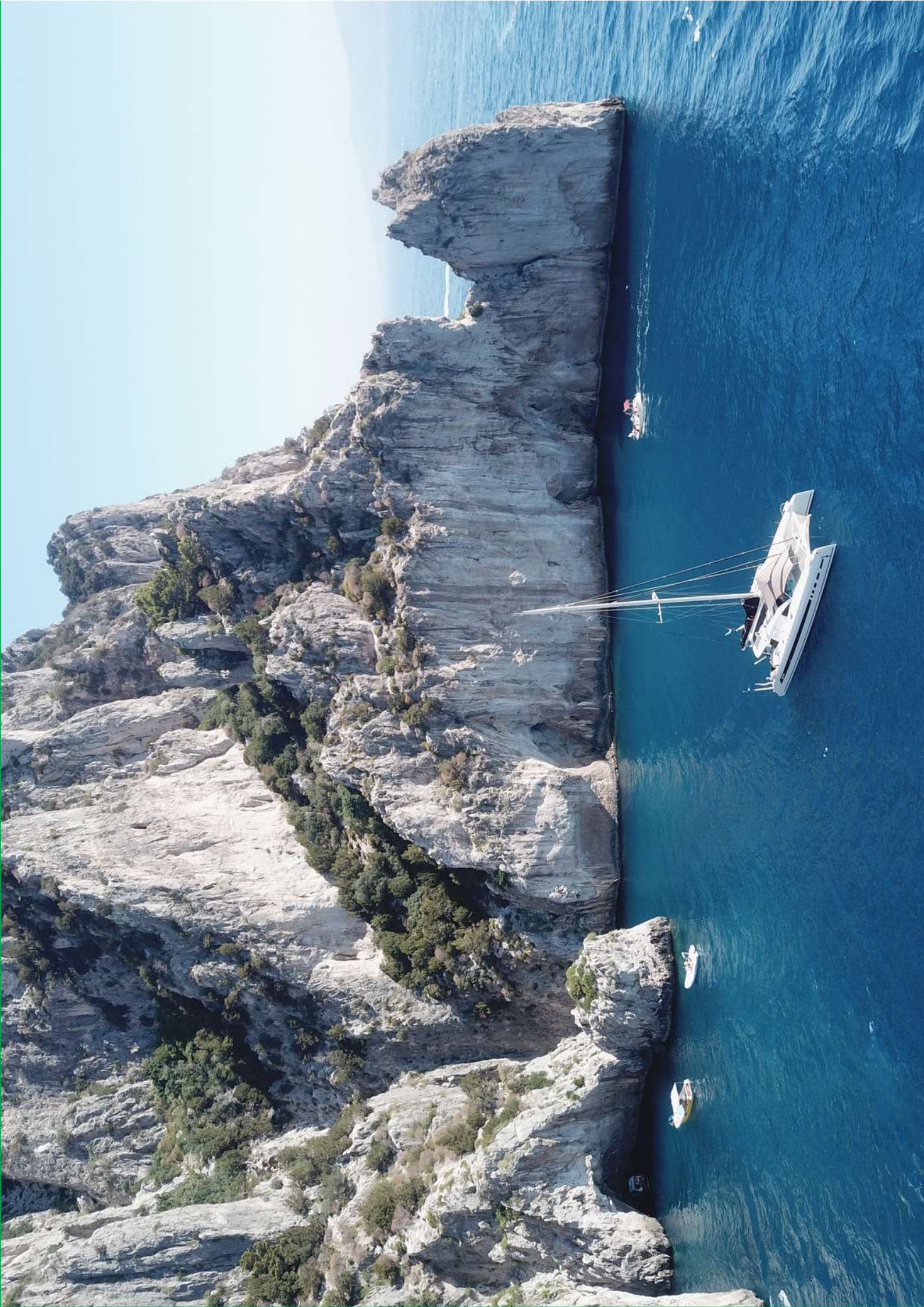


COURBES TENDUES
SANS INTERRUPTION

INTRODUIRE
UN PEU DE
VIEUX A TRA-
VERS COTE
BOULEVARD

LEGERE REMOUEE
POUR DONNER A
L'ENSEMBLE UN
ASPECT BEAUCOUP
PLUS PROPULSIF

AVEC L'AUGMENTATION DU
HOBLOT CENTRAL, NOUS AVONS
DES ESPACES ENTRE LES
PUBS LOIS ARRIERES. A LA
2 PUBLIS ARRIERES ONT LA
MEME TAILLE = PLUS HANO-
NIQUE



Hull Length [LOA]	21 m	Mast, Boom, Beams	Carbon Pre-Preg
Light Displacement	17.5 T	Standing Rigging	Aramid SS Rod
Max Displacement	23 T	Deck Hardware	Antal
Max Beam	9.75 m	Engine	2x Yanmar 80HP
Draft	1.6 m	Fuel	900 > 2000 L
Air Draft	27.45 m	Water	1100 L
Upwind Sail Area	221 m ²	Solar Panels	3 KWC
Downwind Sail Area	460 m ²	Wind Turbine	700 W
Hulls	Glass/Corcell/Epoxy	Generator	2 x 7 KW
Superstructure	Carbon/Epoxy	Number of Berths	6 / 8

The concept's brief had as key priorities: Simplicity, Robustness, Reliability, Silence on board and potential for very long periods of autonomy at sea.

At the same time, the boat had to be light, offering excellent performances over long distances, yet with a small crew, while being elegant and refined, spacious and with superb accommodation

This is how the GP70 was born – For Fast, Timeless, Easy-Sailing across the Oceans





An Escape From The World



A large ocean sailing boat is first and foremost a place of life, a privileged space of exchange with one's guests, a place of meditation far from the fury of the world.
To achieve this complex alchemy the living space must be precisely carved:

Visual Space and Sensation of Infinity:

Privilege of the catamaran, the daytime living space is in a dominant position on the ocean.

It was therefore important that this 360° view was magnified by all-round glazing, yet preserving intimacy in the port areas

Functionality:

Life on board must be respected! The kitchen is worth of a great chef, each cabin has large volumes, the saloon is a real lounge, both inside and outside. A place where you can read, meet friends or watch a movie.

It is possible to isolate everywhere on the boat on relaxing sofas with seaview on the sunset, or to fall asleep when fatigue is arriving.

Few boats offer three living spaces, independent and comfortable, where one can isolate without interfering with "other's" life.





An Escape From The World



Movement:

At sea, crossing an empty space is difficult or even dangerous, think about passing through a large-area cockpit without any handrail or handgrip.

Going forward to maneuver or to enjoy the boat's fine hulls splitting the sea must also be safe.

Special care has been taken while designing these details

Noise:

Every boat, due to its small size, is a place of noise concentration.

Accepting the sounds of the nature, the sea, wind and animals is pleasant, whilst those produced by our essential mechanical equipment are most certainly not.

Therefore, sound insulation was cared after far beyond the standards of series boats, to deliver a state of the art tranquility on board

Ventilation:

A point abandoned by most manufacturers is indeed the intrinsic air circulation of our boats.

The GP70 is in pole position when it comes to comfortable ventilation in all conditions, not only in calm sea and good conditions.



GP70

Green Solutions



Sail in style and with conscience for the environment on the GP70, a sleek fast catamaran that harness the power of renewable energy for its electric needs.

The GP70 is a perfect solution for those seeking to minimize their carbon footprint while enjoying open waters.

Optimized Energy Efficiency:

Through reduced drag, and impressive power-to-mass ratio, we managed to achieve less fuel consumption, making every voyage a greener one

Energy Producer:

Equipped with solar panels and wind turbines, this multihull empowers you to set sail with peace of mind, making a positive impact on the environment.

Embrace the future of sailing with an extremely low carbon footprint



The GP70 is designed to hold high average speeds with ease of operation for a small crew.

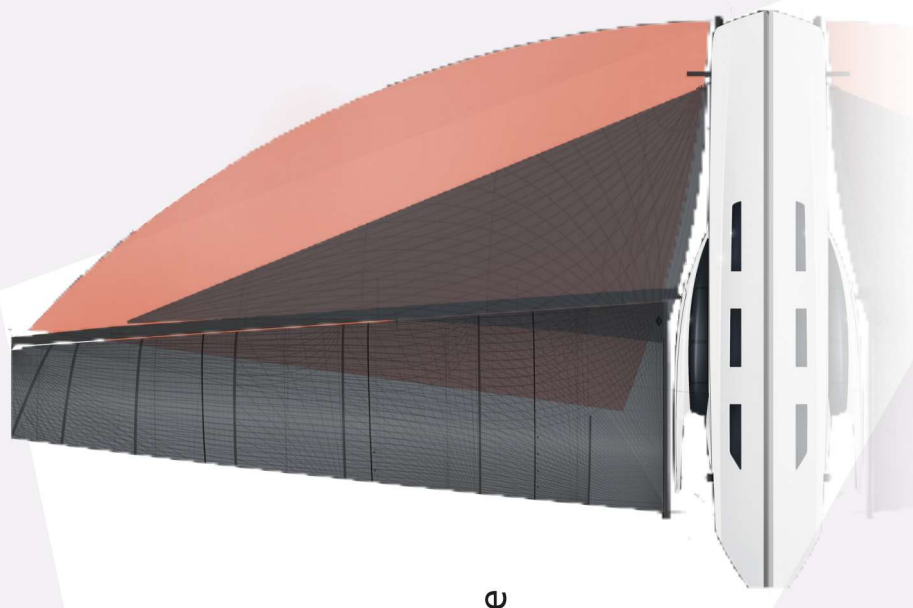
Appendages were optimized, superstructures aerodynamically studied and the rigging was developed to be efficient in all conditions.

Almost Infinite Autonomy

GP70 is an incredible adventurer, with the unfair advantage of almost infinite autonomy.

Capable of loading up to 2000 liters of fuel, it can sail for months before having to refuel.

Moreover, the clean and renewable energy generated by the systems, allows for reduced operating costs.





GP70

Highly Comfortable



Pleasure Sailing

Sailing Oceans with confidence or exploring the wonders of the arctic zone while enjoying spacious living spaces, high-end amenities, elegant interiors, safe from the vicissitudes of the external environment, is a privilege reserved to few.

Timeless Space

Take advantage of Air Conditioning or Heating, within a modern, decluttered visual space.

From the wide transom for ocean access, the open space protected by the bimini, the well thought-out storage areas, it is clear that Aesthetic and Functionality meet, thanks to extensive studies on materials' harmony, colors and high-quality equipment.

Safety First

The GP70 is structurally unsinkable, even in case of major water intake its structure is insubmersible

Its shallow draft makes avoiding reefs and shoals a breeze, difficult to reach areas become accessible and its hulls can safely "sit" on the sand in shallow bays.

Thanks to its superb max speed, the GP70 can stay clear of depressions and easily escape cyclones' dangers.





A State of the Art boat, designed with the latest Hydrodynamics techniques, boasting Elegant yet High-Performance shapes

Aeronautics and Racing Sailboats Techniques:

The pursuit of Strength and Lightness without compromise results in extensive use of Carbon Fiber and Epoxy Resin, ensuring also optimal longevity.

A Carbon Mast, Boom and Textile Rigging furthermore lighten the upper parts, reducing pitching

Best Technologies:

Integral Electric Generation System intelligently replace the overly heavy generator set

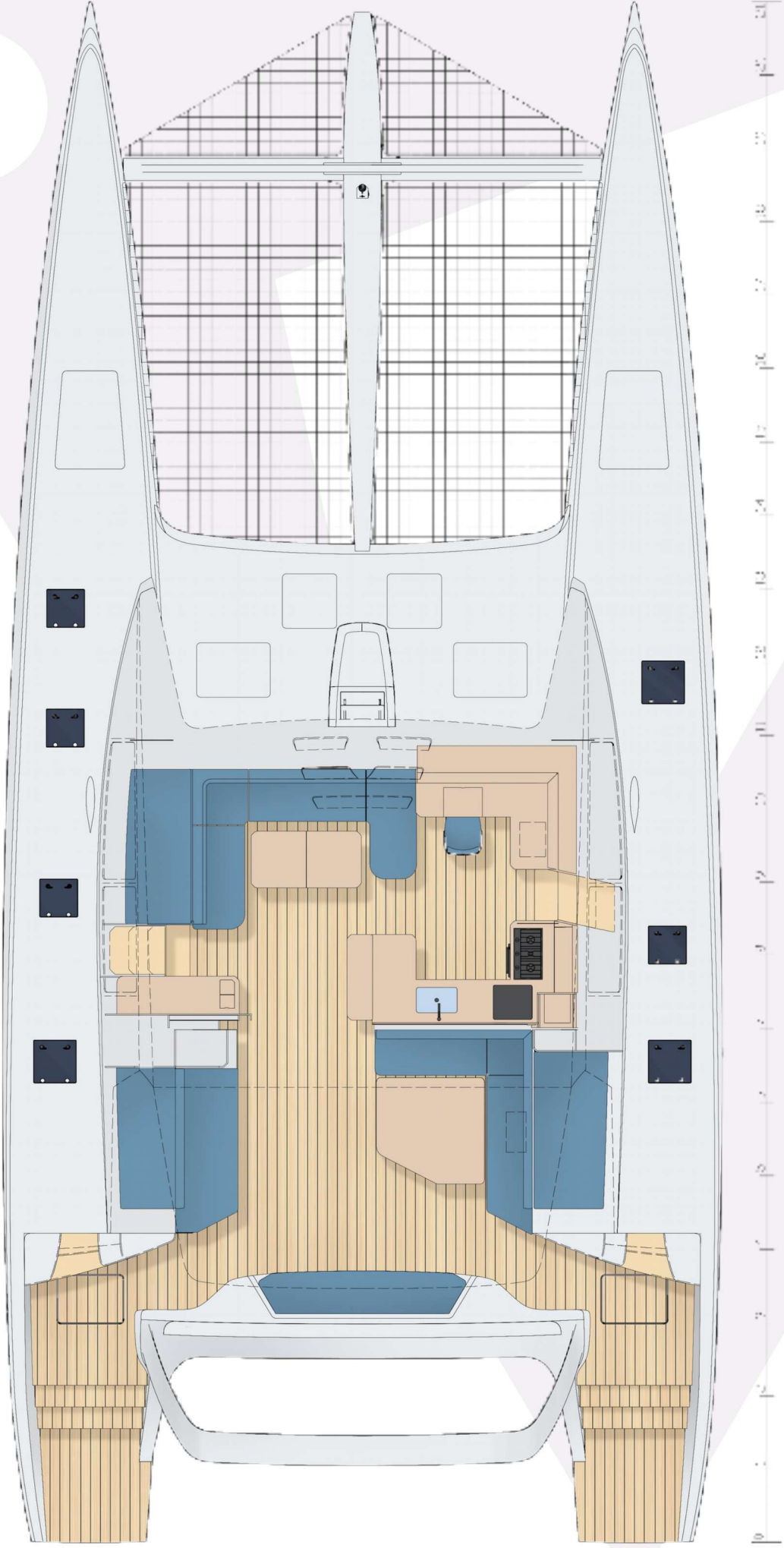
Energy is conserved through customization of the large energy consumers and the use of new Vacuum Insulation Systems

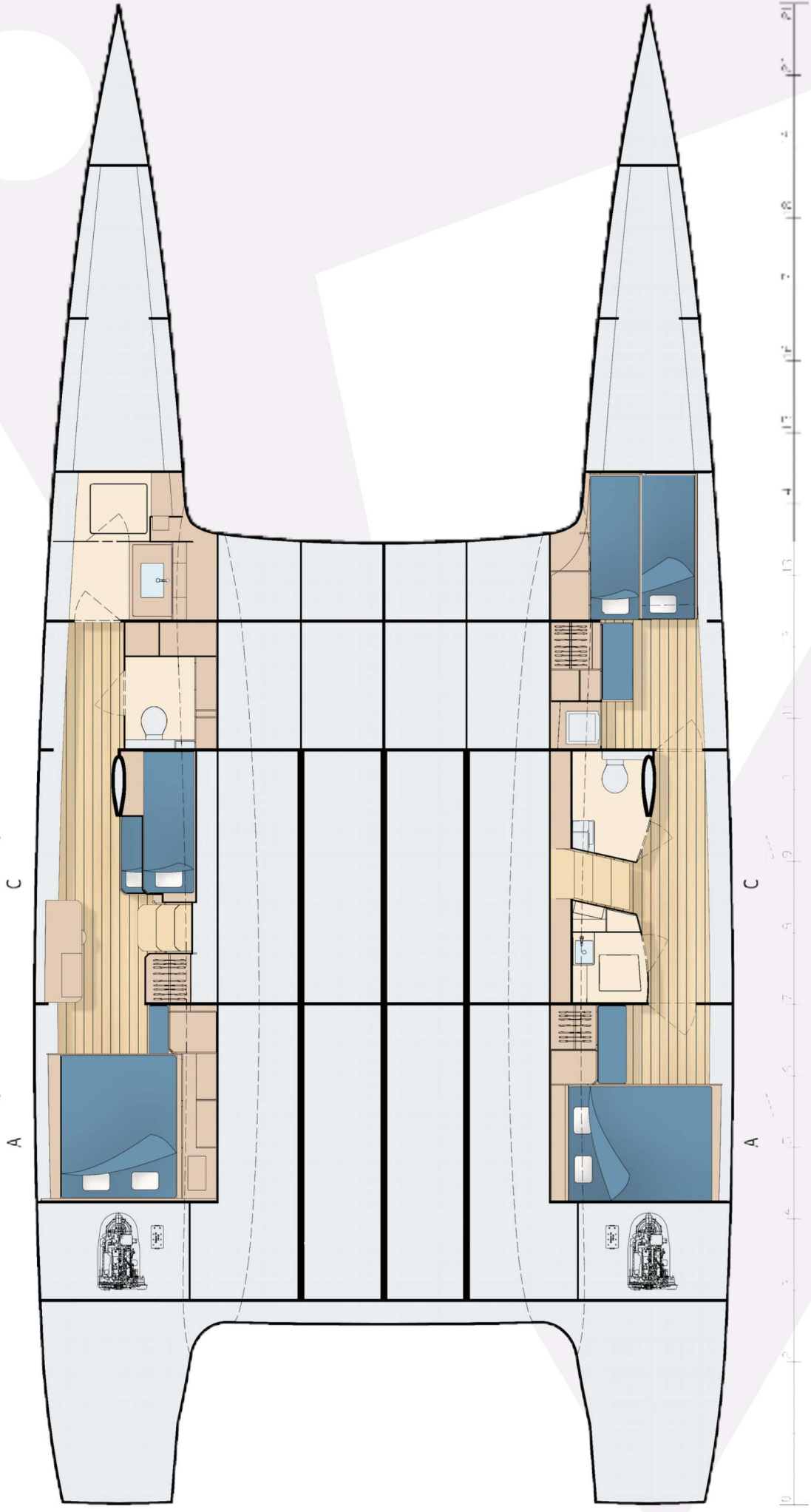
High-Efficiency Solar Panels, Wind Turbines, Lithium Batteries and latest generation Control Electronics ensure comfortable and Self-Sufficient Life on Board

Two Water-Makers are installed in the boat, with an additional mineralizer with a dedicated tank to produce mineralized water on board.

670

General Arrangement









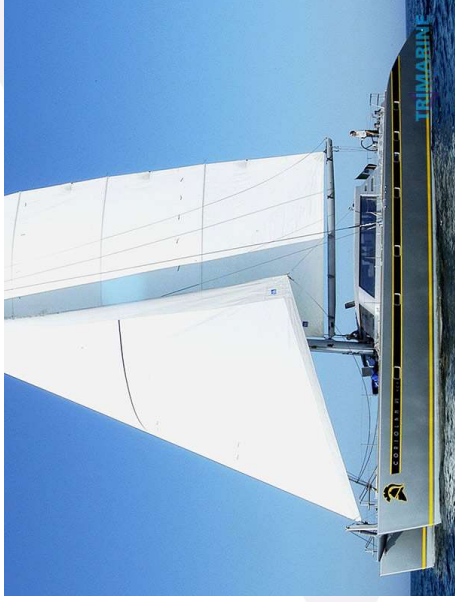
Why Trimarine



40 Years of experience in the boat-building industry

Specialising in the Construction, Process Engineering and Systems Design of racing vessels and high performance yachts, using advanced composite techniques and materials

Notable Cruising Multi-Hulls from Our Past:



VPLP 77' - Coriolan VI



LeRouge 57' - Obi One



Nigel Irens 64' - Adrenalina Pura

TRIMARINE

670



VPLP
Design